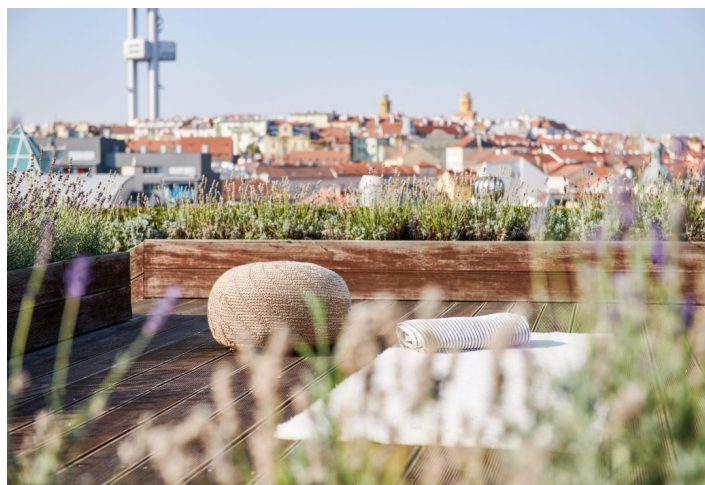




## Apartment Six-bedroom (7+1)

471 m<sup>2</sup>, Prague 3, Žižkov

€ 4 734 925 | CZK 117 000 000





# Apartment Six-bedroom (7+1)

€ 4 734 925 | CZK 117 000 000

471 m², Prague 3, Žižkov

Total area	667 m²
Floor area*	471 m²
Terrace	197 m²
Garden	486 m²
Parking	4 underground garage parking spaces
Garage	Yes
Cellar	Yes
Service price	53 000 CZK monthly
PENB	B
Reference number	23291

\* Size of the unit according to the Housing Act.  
The area consists of the sum total of the internal area of every room.

This unique penthouse with breathtaking views of Prague and a total area of 1,153 sq. m., including gardens and terraces, is the embodiment of luxury, an exceptional style, and comfort. Thanks to its location on the top floor of two apartment buildings, generous layout, and top-notch facilities, the apartment resembles a private rooftop villa. The large indoor pool with a countercurrent system, fully automated home control system, and direct access from the elevator elevate this penthouse—figuratively and literally—to the pinnacle of Prague’s residential market.

The apartment offers a wide range of facilities. Besides the living room, open plan kitchen, 4 bedrooms, and 2 bathrooms, there is also a **study and an airy lounge**. The remaining rooms consist of a guest toilet, large walk-in wardrobe, a utility room, and plenty of storage space. No matter where you stand, thanks to the **glass walls**, you can always enjoy panoramic views of the city including the Prague Castle complex, Strahov Monastery, and Petřín and Vítkov hills. The private zones of the apartment face an adjacent park. On the upper floor is a veritable oasis for relaxation and entertainment with a **glass atrium with a swimming pool** surrounded by a professionally designed and carefully tended **garden** showcasing lush greenery. Simply relax in the gazebo, light a fire in the fireplace, and enjoy watching the sun set over Prague.

The interior is characterized by a **combination of modern clean lines and original Art Deco elements** such as restored period furniture, lamps, and other accessories. Automated security entry doors are controlled via a fingerprint reader, just as the security system and elevator leading from the garage directly to the apartment. Other electrically controlled features include blinds, curtains, heating, a central audio system, and a fully automated pool.

The apartment is located in the vicinity of a large park, only 15 minutes to downtown Prague. The penthouse has 4 parking spaces in an underground garage.

Floor area 470,8 m², garden and terraces 682,4 m², cellar 4 m².

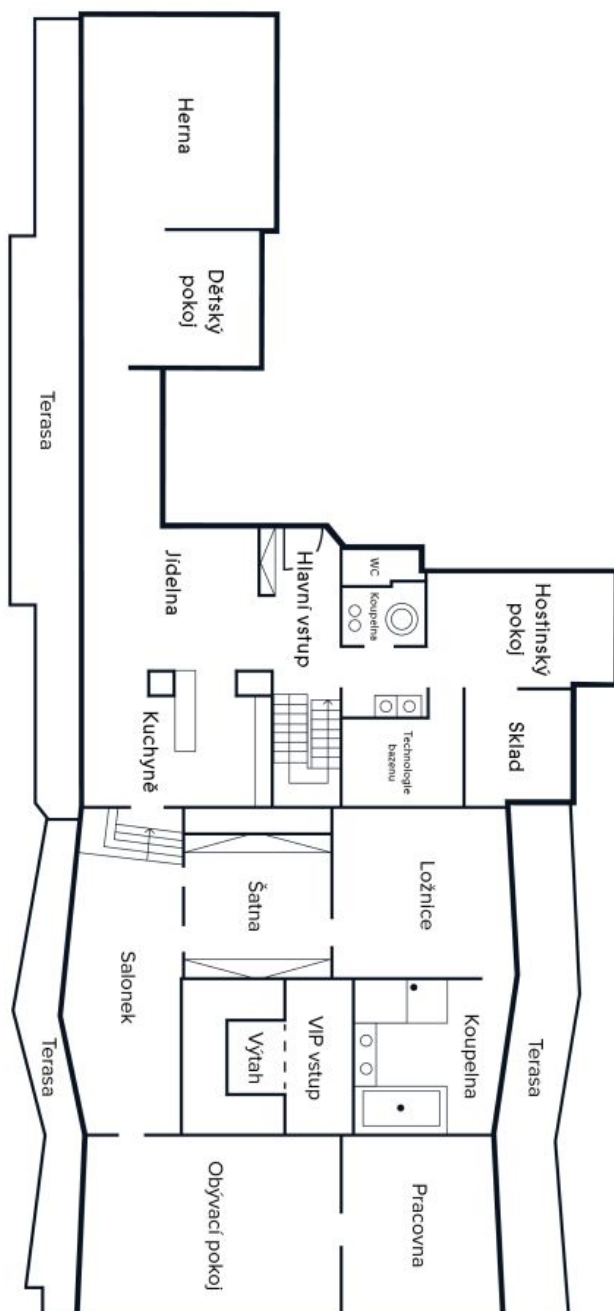




## Apartment Six-bedroom (7+1)

471 m², Prague 3, Žižkov

€ 4 734 925 | CZK 117 000 000



Jeseniova

Byt 7+1

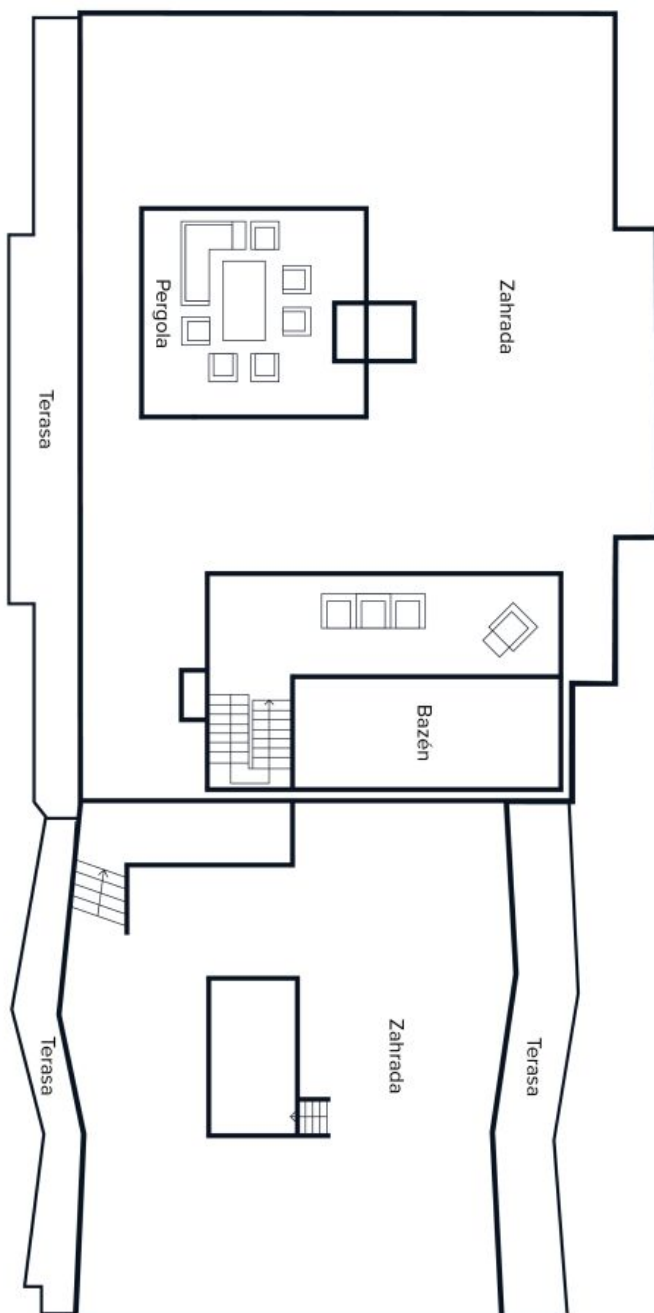
6. NP



# Apartment Six-bedroom (7+1)

€ 4 734 925 | CZK 117 000 000

471 m², Prague 3, Žižkov



Jeseniova

Byt 7+1

7. NP