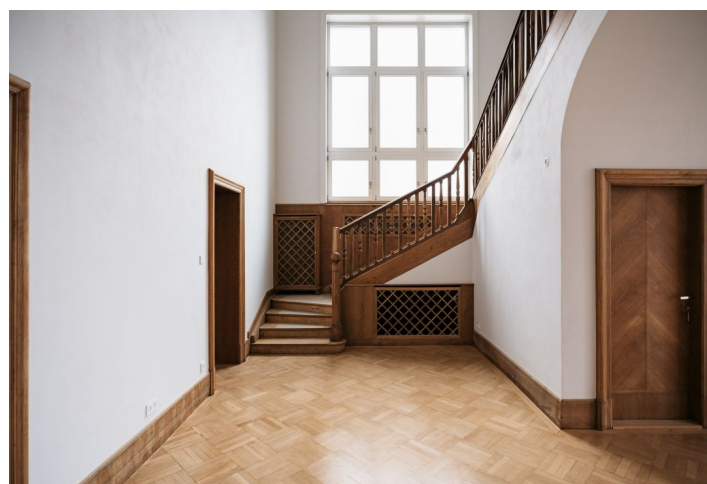




House Nine-bedroom (10+1)

Ask for price

724 m², Prague 6, Bubeneč, Heineho



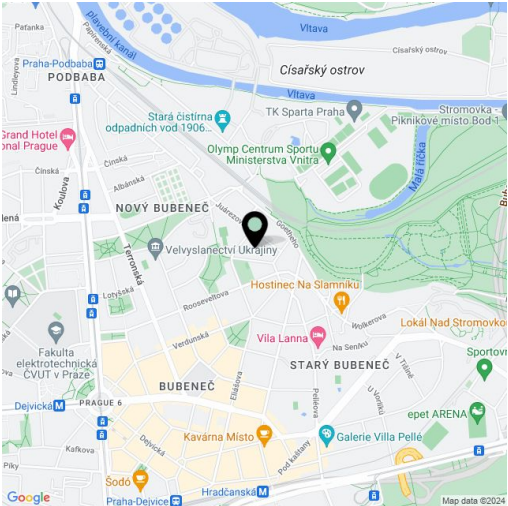


House Nine-bedroom (10+1)

Ask for price

724 m², Prague 6, Bubeneč, Heineho

| | |
|------------------|--|
| Plot | 1 007 m² |
| Foot print | 282 m² |
| Garden | 725 m² |
| Parking | Parking on the plot. |
| Cellar | Yes |
| Service price | Utilities in the approximate amount of CZK 30,000/month are billed separately. |
| PENB | G |
| Reference number | 9724 |
| Available from | Immediately |



Meticulously renovated villa. This stately elegant unfurnished villa from 1914-1920, featuring 8 bedrooms, 4 bathrooms, and a lovely mature garden, in a prestigious diplomatic area in Bubeneč neighboring numerous embassies, just a few steps from Stromovka, the largest park in Prague, is located in a quiet residential area with complete amenities within easy reach and quick access to the city center and the Václav Havel airport. Conveniently located for international schools, and just a short walk from the Hradčanská and Dejvická metro stations.

The main floor boasts a grand reception hall with a gracious original carved wooden staircase, a double lounge with a **winter garden**, a formal dining room, a spacious study, an entrance foyer with original built-in wardrobes and a powder room, and a fully fitted kitchen. Several French doors lead to a large **terrace** and a lovely mature **garden** wonderful for garden parties. The first floor includes 4 bedrooms - the master bedroom with an en-suite bathroom (bathtub, walk-in shower, toilet with a bidet shower), a family bathroom (walk-in shower, bidet, toilet), and a **balcony** accessible from the bathroom and one bedroom. The second floor features 4 bedrooms - one with an en-suite bathroom (bathtub, toilet), two small **walk-in closets**, and a fourth bathroom (bathtub, bidet, toilet). There is a full basement (with windows and garden access) with a laundry room, storage space, a boiler room, and a wine cellar.

Modern technologies, LOXONE smart home system, renovated original **hardwood surfaces and floors**, Italian large-format tiling, original built-in hardwood closets and storage rooms throughout, high ceilings, stucco ornaments, large windows, gas boiler, underfloor heating in the kitchen and bathrooms, **Villeroy & Boch and Hansgrohe** sanitary ware, **Miele** kitchen appliances, dishwasher, induction cooktop, microwave oven, alarm, Wi-Fi 6, camera system, laundry chute, automatic gate. **Parking** and charger for electric cars is available on the plot.